



Kitakyushu Manga Museum

## Leiji Matsumoto, Honorary Director

Kitakyushu is the entranceway to Kyushu, through which various types of culture, art and education enter the island. There are also a lot of newspaper companies in the city, including the west Japan regional headquarters of the national press, so there are lots of different kinds of people doing lots of different jobs there too. When I was growing up, there were many book shops and movie theaters in the city and we were able to read and see everything. Culturally, the city was blessed, and it had the heavy industrial area where the steelmakers of Yahata and Kokura spewed out their black smoke too. Culture and industry - we were able to come in contact with both and have taste experiences that could not be sampled in any other town on an everyday basis.

Because of this, many scholars, writers and manga artists have been born in Kitakyushu. This museum mainly introduces the works of manga artists associated with the local area.

The word "manga" is written with two kanji characters, "man" and "ga", in Japanese. If you break down the first of these, "man", it contains elements meaning "water", "sun" and "eye". I think that manga are fresh like water, warm like the sun and drawn with young eyes. Please enjoy the power of the town of Kitakyushu, where so many manga artists have been born.

August 3, 2012

### Manga artists associated with Kitakyushu (As of August 2012)

Yumiko Akiyoshi	Tashi	Rurika Fuyuki
Masaharu Inoue	Midori Takakura	Tsukasa Hojo
Shinshu Ueda	Shinichiro Takada	Mochiru Hoshisato
Masafumi Kikuchi	Tokihiko Tanaka	Ryo Maekawa
Satomi Koue	Hitoshi Tanimura	Leiji Matsumoto
Yuki Sato	Fumio Nakajima	Maria
Hiromu Shinozuka	Takeru Nagayoshi	Eiko Mutsu
Keiko Suenobu	Mutsumi Hagiiwa	Katsumi Yamaguchi
Masahiro Suematsu	Jun Hatanaka	Miyuki Yamaguchi
Tetsuji Sekiya	Cocoa Fujiwara	Keiko Yamada
Hisashi Sekiya	Kyoko Fumizuki	Seizo Watase

And many more!!

# 北九州市漫画ミュージアム KITAKYUSHU MANGA MUSEUM

## Permanent exhibition admission fee

Adults	480 (380) yen
Junior high and high school pupils	240 (190) yen
Elementary school pupils	120 (90) yen
Pre-school age children	Free

\* Prices in brackets are for groups of 30 or more people.

## Annual passport (1 year)

Adults	2,400yen
Junior high and high school pupils	1,800yen
Elementary school pupils	1,200yen

## Opening hours

11:00 ~ 19:00  
Admission is possible up to 30 minutes prior to closing.

## Closed

Tuesdays (the following day if Tuesday is a holiday), year end, New Year, etc.

## Visiting Tips

- Re-entry is possible up to 30 minutes prior to the museum closing.
- At the planning exhibition area, the museum staff will hold a variety of exhibitions according to different periods. The latest planning information of the exhibition will be published on the official website of the Kitakyushu Manga Museum.

## Access by public transport



\* Please use the public transport system as there is no car park at the Kitakyushu Manga Museum.



Aru Aru City, 2-14-5 Asano,  
Kokurakita-ku, Kitakyushu City 802-0001  
Tel: +81-93-512-5077 Fax: +81-93-512-5130

URL: <http://www.ktqmm.jp>

No.1809194C

# 北九州市 KITAKYUSHU 漫画ミュージアム MANGA MUSEUM

ENGLISH

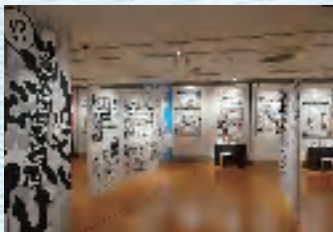


©Leiji Matsumoto ©Hisashi Sekiya ©Jun Hatanaka

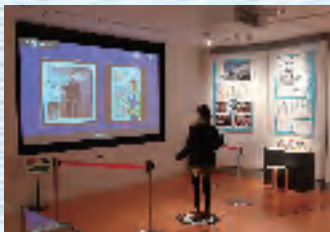




**1 Kitakyushu to the Galaxy :  
The City that Influenced Leiji Matsumoto**  
This space introduces the background and work of Leiji Matsumoto, a manga artist from Kitakyushu. Visitors can watch an interview program commissioned for the museum and look at some of the artist's anime works.



**2 The 7 Wonders of Manga**  
This space introduces how manga is made in an easy-to-understand way, including the process leading up to completion of a manga and the rules for dividing frames, etc. The actual work desk used by Hisashi Sekiya, a manga artist from Kitakyushu, is on display here.



**3 Kitakyushu : Manga City**  
This corner introduces visitors to the relationship between the city of Kitakyushu and manga as well as the manga artists associated with the area. Visitors can enjoy a database containing artist profiles and commentaries on their works, etc., in a game-like way.



**4 Manga Time Travel from 1945 to the Present**  
From 1945 to the present, this space introduces the manga of post-war Japan and the history of society using book-form manga that visitors can actually pick up and read.

### 5 Side Stories Related to Manga

The deep and wide world of manga mixes behind-the-scene struggles and scholarly discussions, and this corner introduces such things with items of knowledge. The museum updates this corner at irregular intervals.

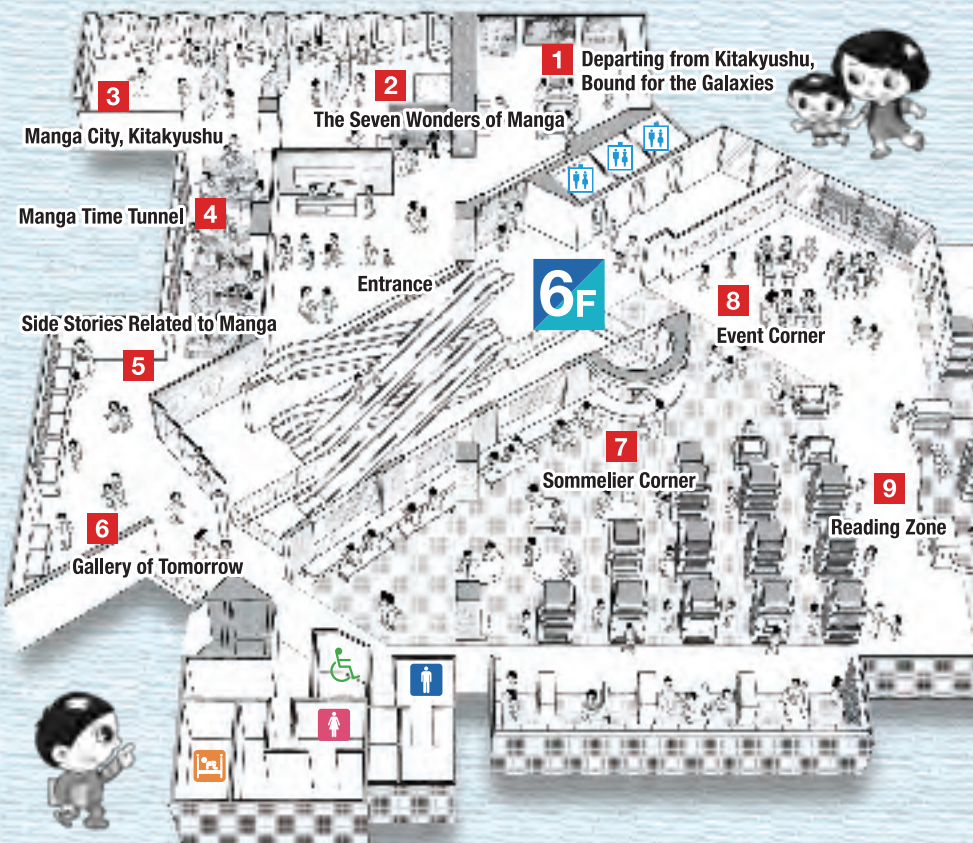
### 6 Gallery of Tomorrow

This is a mini-exhibition space that introduces works by new creators active in the local area. The museum handles a wide range of work including illustrations and figures as well as manga.

### 7 Sommelier Corner

This is a special topic corner that introduces recommended works from among a great many manga. There is also a Sommelier Counter that will answer visitors' inquiries about manga.

## Permanent Exhibition Area



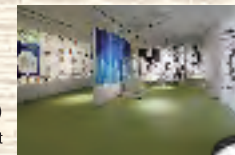
## Reading Area



**9 Reading Zone**  
Visitors can read about 50,000 books freely. This is a space where people can read famous old classics or hit works, etc., in a relaxed atmosphere. The museum also displays things like users' thoughts and opinions on manga and manga-related news in this area.

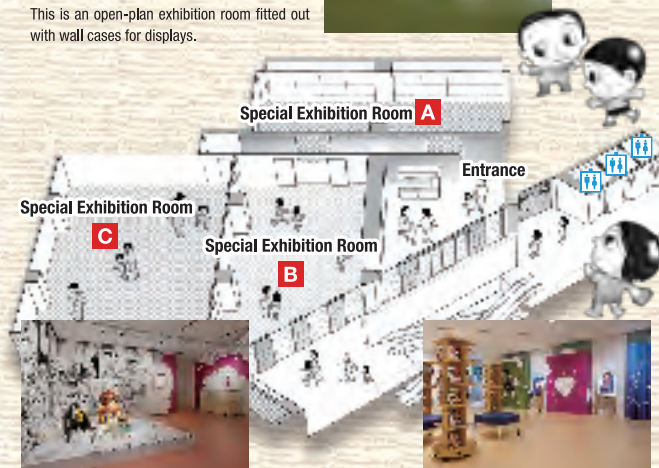
# KITAKYUSHU MANGA MUSEUM

## Special Exhibition Area



5F

**Special Exhibition Room A** (about 130 m²)  
This is an open-plan exhibition room fitted out with wall cases for displays.



**Special Exhibition Room C** (about 180 m²)  
This is an exhibition room that can also be used as a mini hall and is available for events, etc.

**Special Exhibition Room B** (about 140 m²)  
This exhibition room is a lobby-like space and is also available for multipurpose functions such as receptions, etc.



## Notices inside the museum

When visiting please pay attention to the following notices.

**Cameras and photography is forbidden excluding certain areas inside the museum. Mobile phone photography is also forbidden.**



**Photography is allowed in the areas with this mark.**

**No eating and drinking inside the museum.**

**Mobile phone call may negatively affect other visitors enjoyment, so please don't use it inside the museum.**

**To protect the exhibits please don't bring umbrella and large items with you into the museum. (Please use the umbrella stands provided.)**